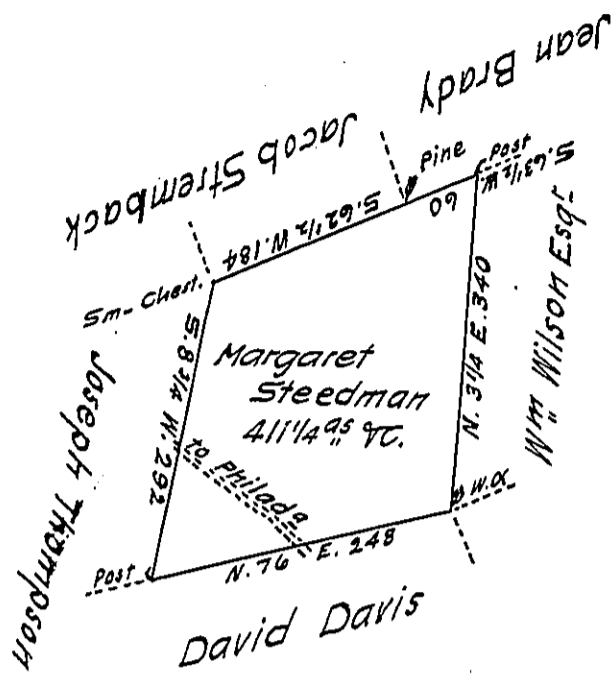


Sug. Loaf -
LUZERNE

W



184
60
244

A Draft of a tract of land called _____ situate on the road from Berwick to Philadelphia in the County of Luzerne containing four hundred & eleven acres 1/4 & allowance surveyed for Margaret Steedman the 30th day of Sep^r 1793 by virtue of a warrant dated the 13th day of June 1793.

by

W^m Gray D.S.

To Daniel Brodhead Esq^r }
Surv^r Gen^l

IN TESTIMONY that the above is a copy of the original remaining on file in the Department of Internal Affairs of Pennsylvania, made conformably to an Act of Assembly approved the 16th day of February, 1833, I have hereunto set my Hand and caused the Seal of said Department to be affixed at Harrisburg, this twelfth day of May 1911

Henry Horck
Secretary of Internal Affairs.